

Acknowledgements

The Community College of Aurora's self-study has involved the entire College community in an extensive analysis of who we are and what we do. Even before the report was complete, the process produced positive results. More than a dozen committees with members from across the institution gathered and discussed information. They produced specific recommendations and learned more about the College and about what their colleagues contribute and accomplish. As the self-study report took shape, the College community gained a clearer understanding of CCA's strengths, challenges and issues for the future.

Perhaps the most important aspect of the self-study has been the involvement and contributions of so many individuals from through the College. Among these individuals are the following:

- CCA's faculty and staff served on the self-study committees, contributed data and sections for individual chapters, answered many questions, and read various versions of the report.
- The College Advisory Council has provided guidance and support throughout the process.
- The President's Cabinet and Cabinet Advisory Council provided initial leadership for the self-study. The chairpersons of the committees then convened as the steering committee.
- Karl Van Etten and Chris Ward coordinated the self-study process and the writing of the report. Mike Berry provided much of the statistical data. Chris Henning and Liz Van Landingham designed and produced the report.

Glossary

AEC: Aurora Education Center – predecessor of the Community College of Aurora

APL: Aurora Public Library

APS: Aurora Public Schools

CCA: Community College of Aurora

CCD: Community College of Denver

CCHE: Colorado Commission on Higher Education

CCCS: Colorado Community College System

CRS: Colorado Revised Statutes

EEOC: Equal Employment Opportunity Commission

FRS: Financial Reporting System

HEAT: Higher Education and Advanced Technology Center (no longer in operation)

IAAC: Instructional Annual Adjustment Committee

ILT: Instructional Leadership Team

IRC: Instructional Resource Center

LFC: Lowry Family Center

LOEP: Levels of English Proficiency (test)

LRC: Learning Resource Center

MOU: Memorandum of Understanding

NCMPR: National Council for Marketing and Public Relations

OIR: Office of Institutional Research

QIS: Quality Indicator System (State of Colorado)

PAC: Program Advisory Committee

PERA: Public Employee Retirement Association

RRCC: Red Rocks Community College

SBCCOE: State Board for Community Colleges and Occupational Education

SBDC: Small Business Development Center

SGA: Student Government Association

The “System”: Colorado Community College System

UCD: University of Colorado at Denver

UCHSC: University of Colorado Health Sciences Center

Self Study Committees

Committee for the Introduction and the General Institutional Requirements

Lewis Schlossinger – Computers, math and business (**Chair**)
Wayne Gilbert – Humanities, fine arts and social sciences
Yen Phillips – Lowry one-stop student services
Cheryll Wingard – Computers, math and business

Committee on Mission, Purposes, and Decision-Making

Amy Grazier – Student life (**Chair**)
Terry Campbell-Caron – Financial aid
Constance Seiden – Computers, math and business
Claudia True – Center for Workforce Development

Committee on Freedom of Inquiry and Excellence in Teaching and Learning

Bill Thompson – Computers, math and business (**Chair**)
JoAnne Barnes – Humanities, fine arts and social sciences
Chuck Harrington – Computers, math and business
Mark Kemble – Humanities, fine arts and social sciences
Susan Kirk – Humanities, fine arts and social sciences
Shirley Piper – Information technology

Committee on Governance and Administration

Ron Ross – Human Resources (**Chair**)
George Lesko – Computers, math and business
Judy Patrick – Lowry one-stop students services (past Chair)
Kendra Wimbush – Center for Workforce Development

Committee on Human Resources

Sue Waldheim – Humanities, fine arts, and social sciences (**Chair**)
Mike Berry – Institutional research
Linda Bradford – Humanities, fine arts and social sciences
Michael Harris – Admissions and records
Dianda Havel – Human resources
Christy Ikeler – Center for Workforce Development

Committee on Physical Resources

Lanne Lancaster – Learning Resource Center (**Chair**)
Gil Davies – Computers, math and business
Reniece Jones – Learning Resource Center
Kader Nouibat – Computers, math and business
Bobby Williams – Information technology

Committee on Financial Resources

Larry Steele – Facilities (**Chair**)
Trevor Borgonah – Fiscal affairs
Bob Fulcomer – Computers, math and business
Jerry Martins – Computers, math and business
Denise Oakeley – Admissions and records

Instruction Committee

Norine Domenico – Instruction (**Chair**)
Karla Adamson – Computers, math and business
Bob Fulcomer – Computers, math and business
Sharon Halford – Instructional support
Geoff Hunt – Fine Arts, humanities and social sciences
Les Moroye – Public service, science and workforce development

Student Services and Enrollment Management Committee

Greg Goode – Student services and enrollment management (**Chair**)
Rebecca Bernstein – Advising Center
Sheryl Broadnax – Learning Resource Center
Libby Broughton – Advising Center
Kristen Cusack – Computers, math and business
Veronica Dubey – student
George Goree – Fiscal affairs

Committee on Strategic Planning Process

Les Moroye – Public service, science and workforce development (**Chair**)
Chris Henning – Communication division
Anna Jansen – Recruiting
Marian Lauterbach – Humanities, fine arts and social sciences

Committee on Integrity in Institutional Practices

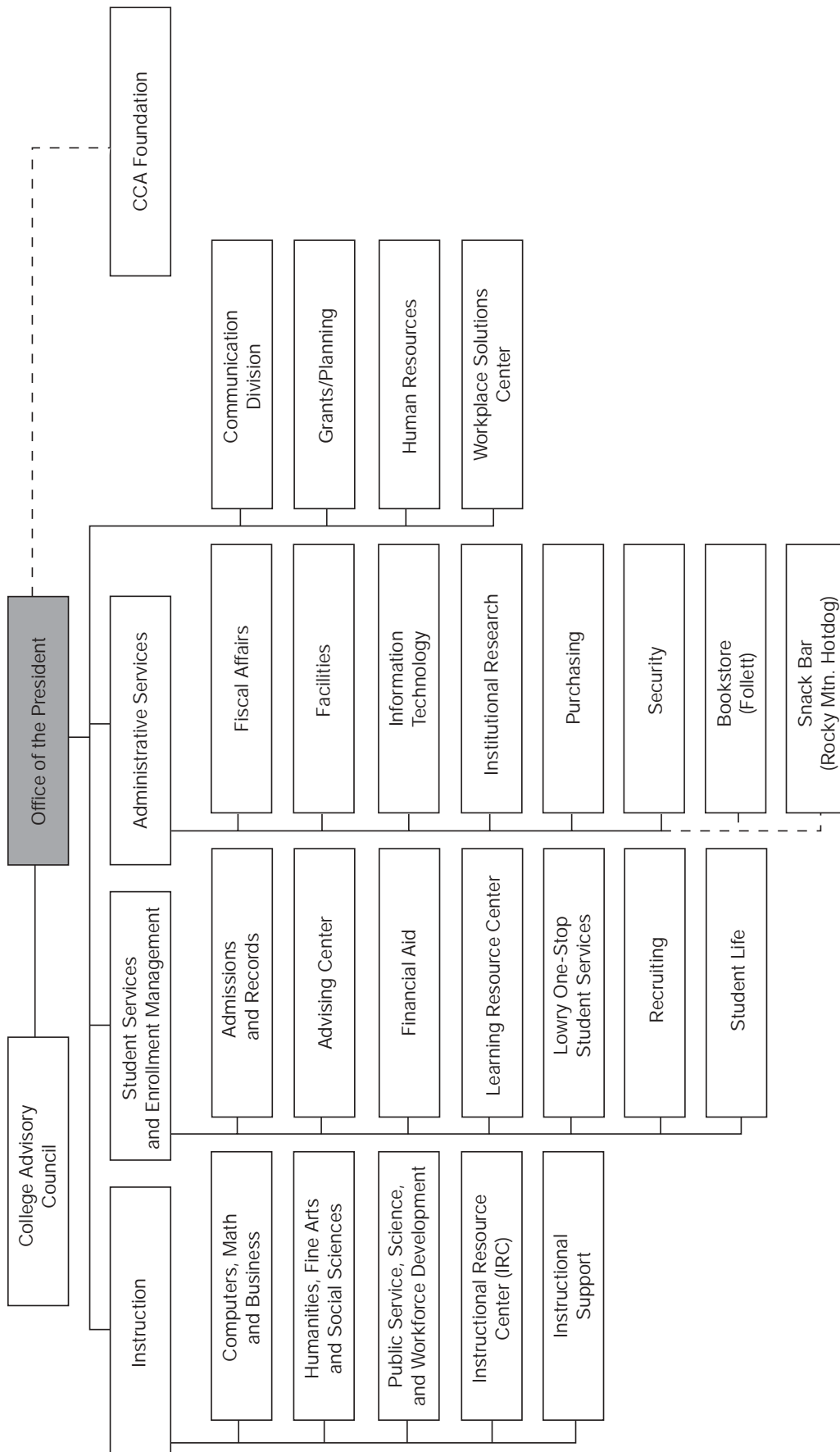
Michelle Amon – Humanities, fine arts, and social sciences (**Chair**)
Shawna Mahan – Computers, math and business
Eduardo Peralta – Information technology
Alexis Ross – Center for Workforce Development
Liz Van Landingham – Communication division

Committee on Integrity in Institutional Relationships

Terry Walker – Public service, science, and workforce development (**Chair**)
Pat Bouley – Fiscal affairs (past Chair)
Charlene Bugh – Computers, math and business
Daniela Higgins – Center for Workforce Development
Geoff Hunt – Humanities, fine arts, and social sciences

Hospitality Committee

Traci Fielden
Tami Morrissey
Cindy Smith
Judy Spitz



CCA Organizational Chart